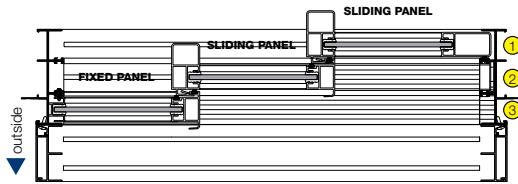


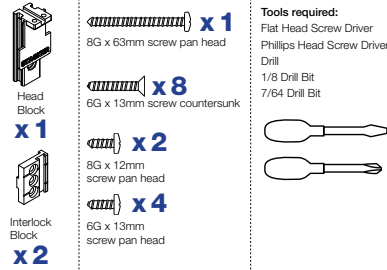
Instructions

Trend® 3 Panel (FXX or XXF) Installation

A Final Layout of Panels for Fixed-Slide-Slide (left hand) Door.
Panel are to be reversed for Slide-Slide-Fixed (right hand) Door.

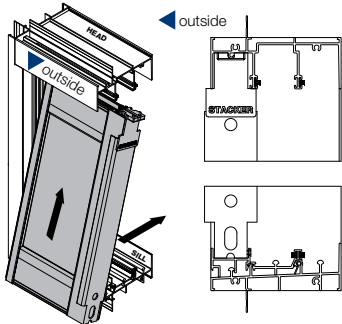


B Tools and Components

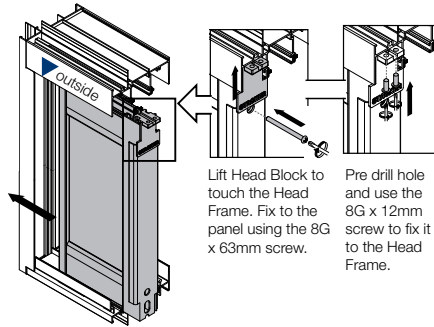


1 Lift Fixed Panel from outside into the end channel (3) of the Head Frame

! Minimum of 2 people are required to lift panels.

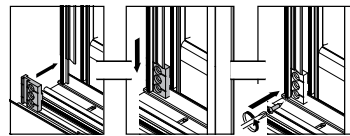
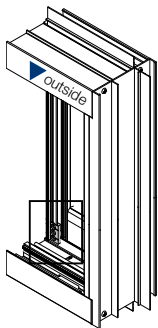


2 Push Fixed Panel into the jamb



Lift Head Block to touch the Head Frame. Fix to the panel using the 8G x 12mm screw to fix it to the Head Frame.

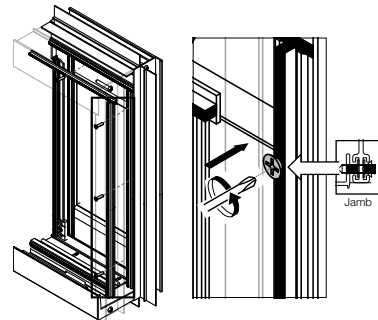
3 Position interlock block as shown



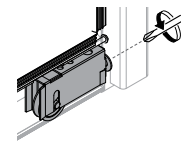
Interlock block must align with the mohair slot. Position block to feed mohair through the slot on the block.

Fix Interlock Block with 6G x 13mm screw through the bottom hole of the block

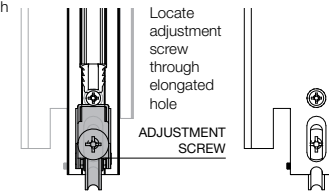
4 Secure Fixed Panel to the Frame. Pre drill and fix along the jamb using 6G x 13mm countersunk screws (x3) through the centre of the mohair slot



5 Before installing the Sliding Panel, Adjust the rollers both sides to lower the panel



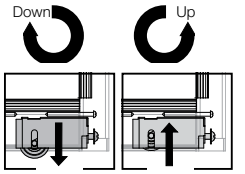
To adjust roller



Locate adjustment screw through elongated hole

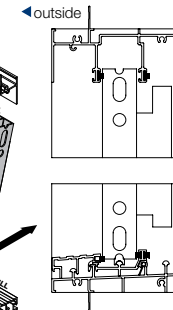
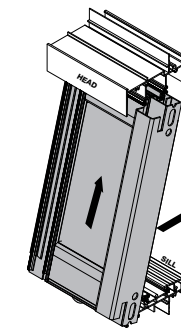
ADJUSTMENT SCREW

Rotate clockwise to raise the panel, counterclockwise to lower the panel



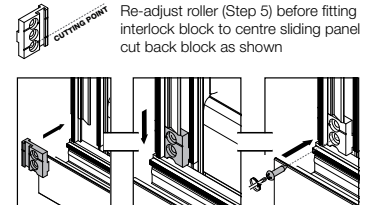
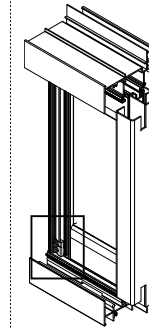
6 Lift Sliding Panel from inside into the centre channel of the Head Frame

** Ensure engaging interlock is positioned before the fixed interlock to be able to engage .



! Minimum of 2 people are required to lift panels.

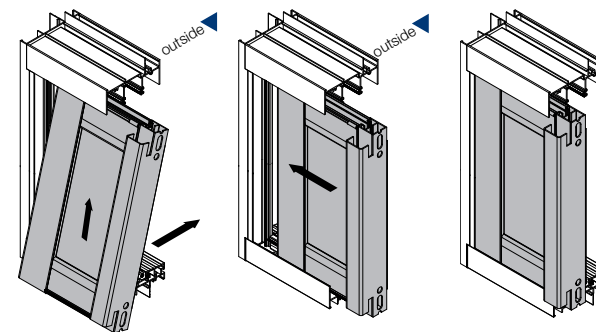
7 Position interlock block as shown



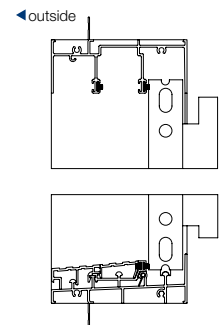
Interlock block must align with the mohair slot. Position block to feed mohair through the slot on the block.

Fix Interlock Block with 6G x 13mm screw through the centre hole of the block

8 Position Sliding Panel so that it is in the open position. Lift Sliding Panel into the inside channel of the Head Frame. Test Sliding Panel and adjust the rollers for ease of sliding.



! Minimum of 2 people are required to lift panels.



Please note that drawings are not to scale

Instructions | Trend® 3 Panel (FXX or XXF) Installation | Mk-1 | 25 Feb 2010

Confidentiality Notice: This document and the information it contains are copyright and confidential to Trend® Windows & Doors Pty Limited. Disclosure, use and copying in any form whatsoever, except as authorised by Trend® Windows & Doors in writing, are strictly prohibited. Patents and Design Registrations pending.